

# InstCube FCE Kit - Instrumentation Mounting Enclosure

## TMS Europe Ltd

The InstCube FCE Instrument Enclosure is made of thin metal, making it easy to customise, and has ventilation grills to prevent heat build up. The Enclosure consists of three pieces; the main section, the bottom panel and the back panel, all have earthing points. The unit is supplied with all necessary screws, as well as four rubber feet. There is a choice of a Relay Mounting Plate or 80mm Fan Guard (allowing either a 80mm fan to be fitted or providing another covered airflow vent) that can be fitted in the bottom panel.

It has cut-outs for optionally components providing power, comms, and sensor inputs, as follows:

- Filtered mains supply IEC connector - for detachable power connection
- M20 cable gland - for a power cable
- DB9 9-way 'serial' connector, with screw or solder terminals - for RS-232 or RS-485 communications
- RJ45 'network' connector - for RS-485 or ethernet communications
- 8x standard 2-pin thermocouple sockets (26x13mm) - for sensor inputs or calibration injection

Weight: 4.5KG (with front panel & relay mounting plate)  
Dimensions (WxDxH): 370x320x220mm

The Front Panel has been designed for mounting instruments is available as part of the InstCube FCE kit or on it's own. It can be used with the InstCube FCE Wall Mounting Bracket if the instruments are fully enclosed. It is also ideal for fitting into existing instruments cabinets and covering cut-outs left by larger previous instruments.

It is made of soft metal and has pre-cut areas that can be easy removed to fit various different instruments in many combinations. There are also cut-outs for switches and indicators. A red self-adhesive facia sheet is provided to be stuck onto the Instrument Front Panel covering unused cut-outs and giving an attractive finish. An earthing stud is fitted.

Cut-out options provided include\*:

2 x 5.5" recorders (138x138mm) (Yellow)

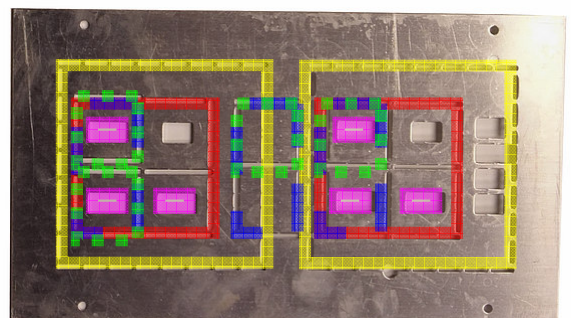
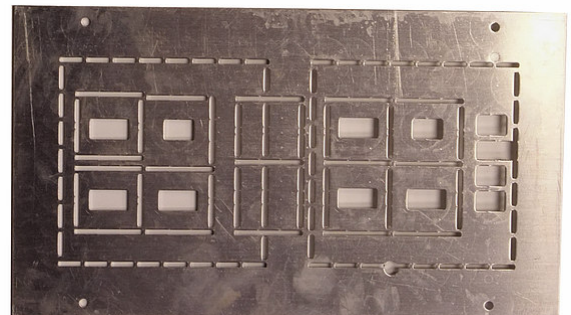
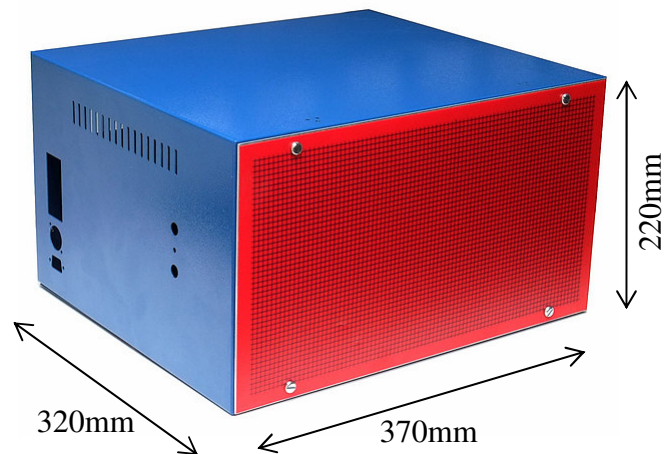
2 x 1/4 DIN (92x92mm) instruments (Red)

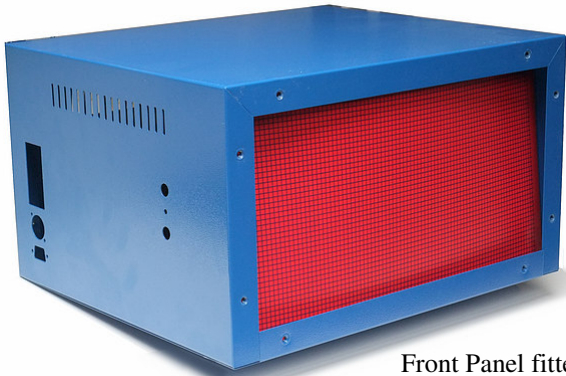
3 x 1/8th DIN (vertical) (45x92mm) instruments (Blue)

4 x 1/16th DIN (45x45mm) instruments (Green)

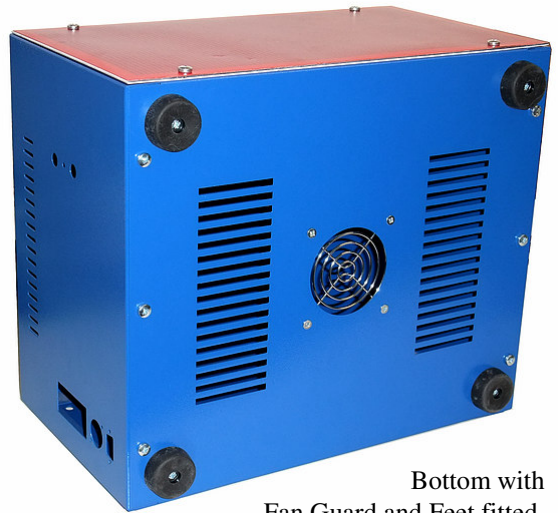
6 x (TMS) Standard Panel Mount Thermocouple Sockets (26x13mm) (Purple)

\* Options show the maximum number of the same items, various combinations of the options listed can be achieve with less than the maximum number of items listed, eg only 1 x 5.5" recorder and 1 x 1/4 DIN controller could be fitted.

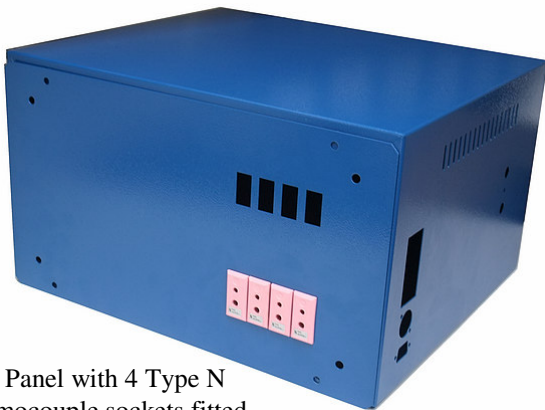




Front Panel fitted in the inner recessed position.



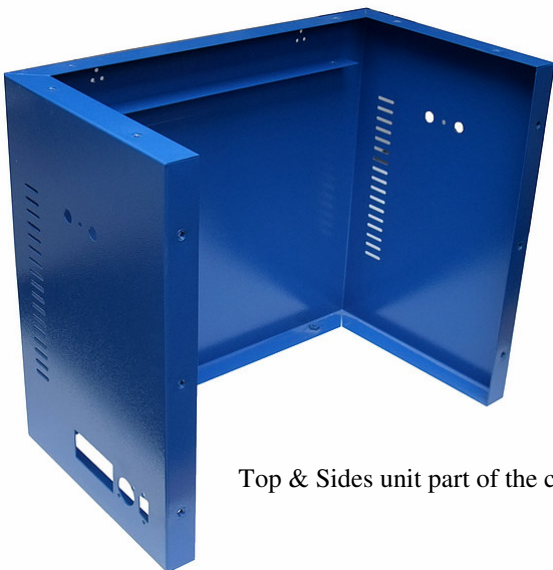
Bottom with Fan Guard and Feet fitted.



Back Panel with 4 Type N Thermocouple sockets fitted.



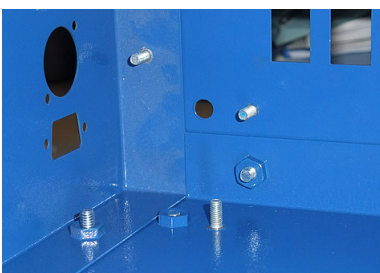
Bottom with Relay Mounting Plate.



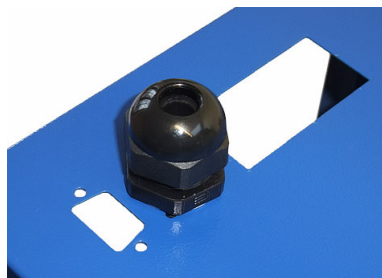
Top & Sides unit part of the case.



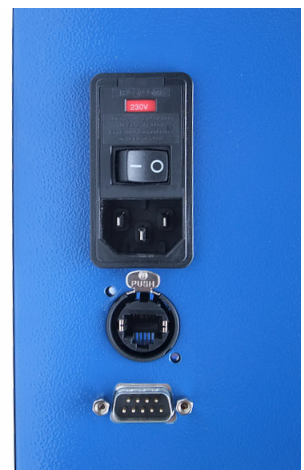
Wall mounting bracket.



Internal view of earth studs.



With cable entry gland.



With filtered IEC socket & fuse holder, RJ45 comms connector, and DB9 comms connectors fitted.

Note: Not all parts shown are included as standard.