

CHY 806A Handheld 2ch. Thermocouple Data Logger

A high accuracy hand-held digital thermometer with data logging for two thermocouple input channels, via miniature sockets. It can measure seven thermocouple types and channels can be set independently for any of the types.

It can log 16,000 data points in one log session with full time and date recorded. Data can be downloaded via its USB lead to a computer and viewed using its Windows software.

A version with UKAS ISO17025 calibration is also available, please contact us with your requirements for a price and lead-time.

Specifications

Input	Range	Resolution	Accuracy		Example of Accuracy
Type J	-210 - 1200°C	0.1°C	-210 to -50°C	±0.05% +0.7°C	±0.6°C @ 600°C
			-50 to 1200°C	±0.05% +0.3°C	
Type K	-200 - 1372°C	0.1°C	-200 to -50°C	±0.05% +0.7°C	±0.7°C @ 800°C
			-50 to 1372°C	±0.05% +0.3°C	
Type N	-50 - 1300°C	0.1°C	-50 to 0°C	±0.05% +0.8°C	±0.9°C @ 1000°C
			0 to 1300°C	±0.05% +0.4°C	
Type R Type S	0 - 1767°C	1°C	±0.05% +2.0°C		±2.60°C @ 1200°C
Type T	-200 - 400°C	0.1°C	-200 to -50°C	±0.05% +0.7°C	±0.4°C @ 200°C
			-50 to 400°C	±0.05% +0.3°C	
Type E	-210 - 1000°C	0.1°C	-210 to -50°C	±0.05% +0.7°C	±0.6°C @ 600°C
			-50 to 1000°C	±0.05% +0.3°C	

Accuracy applicable for instrument ambient temperatures of 18-28°C. Temperature Coefficient: 0.1 times the applicable accuracy specification per °C from 0-18°C and 28-50°C. When in °F mode, resolution for values above 2000°F is 1°F.

Input:	2x Thermocouples via miniature size connectors
Reading Rate:	2.5 times per second
Input Protection:	24V dc or 24V ac rms (maximum input voltage on any combination of input pins)
Dimension:	160 x 83 x 38mm (HxWxD)
Weight:	365g (with batteries)
Battery:	4x 1.5V AAA (supplied)
Battery Life:	120 hours approx.
Accessories:	Windows PC software is included on a CD. A standard USB data cable is included.

TMS Stock Code: DIGIHH-806A (without calibration)

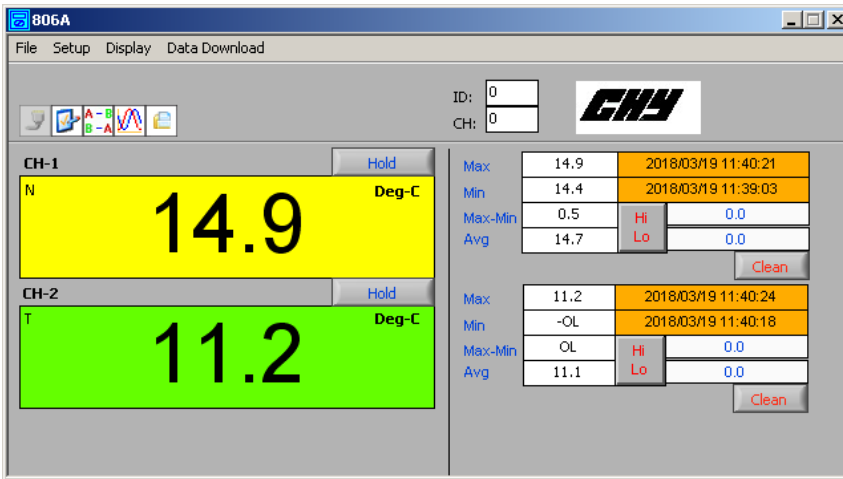


TMS Europe Ltd is a UKAS accredited calibration laboratory No. 0461. We are accredited for calibration on site and in our laboratory, as defined in our Schedule Of Accreditation (see www.tmseurope.co.uk/soa).

TMS Europe is a manufacture of thermocouple temperature sensors and offers a wide range of probes from stock for use with these digital thermometers.



Any prices exclude VAT and delivery and are correct at the time of publication. Specification and price subject to change without notice. Appearance may vary from image(s) shown. All trademarks acknowledged.



Screenshots from the software included with the data logger.

